

STRATEGIC OPERATIONS

HYPER - REALISTIC® MEDICAL TRAINING

BLOOD PUMPING SYSTEM (BPS)

The Blood Pumping System (BPS) is a Hyper-Realistic® medical training system designed to simulate human life threatening hemorrhage in conjunction with the simulated human injury patient. The BPS is an innovation in patient worn bleeding simulations mimicking a small day pack. The BPS is self-contained and allows for (4) simultaneous bleeds controlled by a wireless fob. Each line can be controlled by the operator to simulate both venous and arterial bleeds. The BPS comes in a Basic and Deluxe model.



BASIC VERSION INCLUDES:

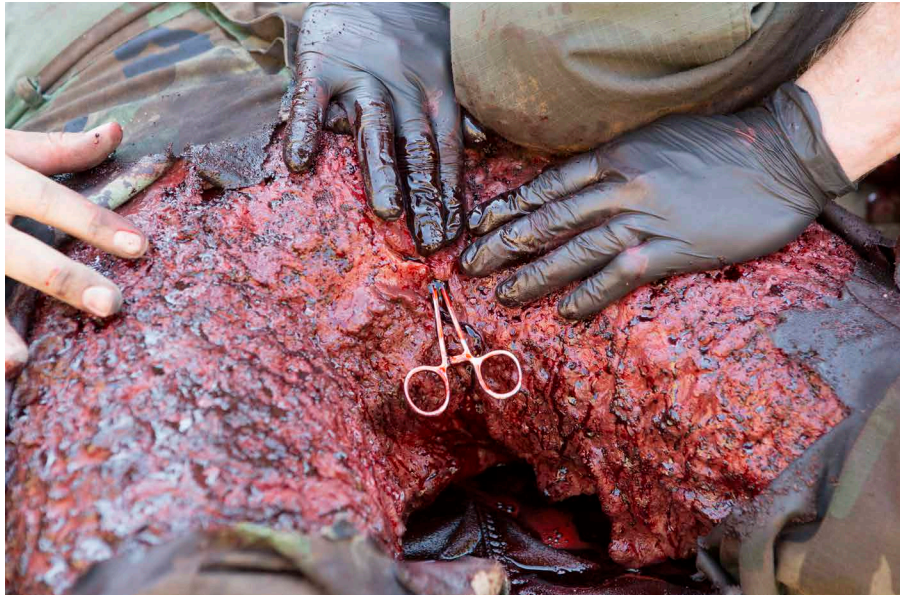
- One (1) femoral sleeve with shorts and protective guard
- One (1) brachial sleeve (without bone) and protective guard
- 2.5 gallons of blood concentrate for up to 12.5 gallons of Artificial Blood.

DELUXE VERSION INCLUDES:

- Two (2) femoral sleeves (1 with / 1 without pants and a protective guard)
- Two (2) brachial sleeves (1 with / 1 without bone and a protective guard)
- 2.5 gallons of blood concentrate for up to 12.5 gallons of Artificial Blood.
- Blast Pants

BY WEARING THE PROTECTIVE SHIELD, THIS ALLOWS FOR PROPER TOURNIQUET APPLICATION AND WOUND PACKING WITHOUT INJURY TO THE SIMULATED PATIENT

BLOOD PUMPING SYSTEM (BPS)



Vessel clamping of a life threatening bleed



Internal hemorrhage compression applied to an upper extremity life threatening bleed



Packing of a lower extremity life threatening bleed



Tourniquet application to an upper extremity life threatening bleed



Tourniquet application to a lower extremity life threatening bleed